

# Microswitch

## SPDT, Roller

---

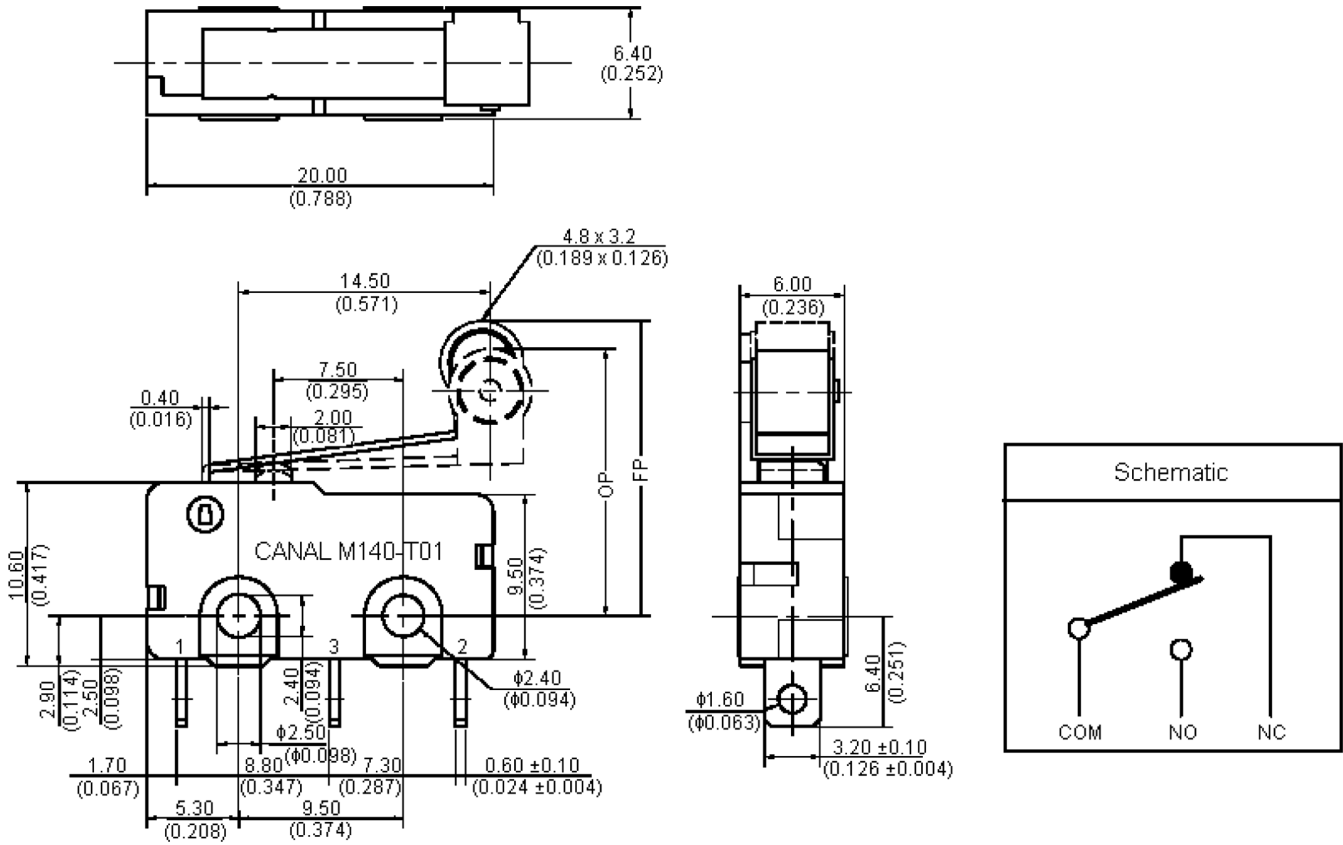


### Specifications:

Rating	: 5A, 125/250V AC : 5(2)A, 125/250V AC (NEMKO/ENEC/CQC)
Maximum Contact Resistance	: 500MΩ
Insulation Resistance	: >100MΩ 500V DC
Withstand Voltage	: 1,000V AC for 1 minute
Operating Frequency	: Mechanical 60 operations/minute : Electrical 6 to 12 operation/minute
Ambient Temperature	: -25°C to +85°C
Ambient Humidity	: ≤ 85%RH
Mechanical Life	: 1,000,000 cycles
Electrical Life (at rate load)	: 50,000 cycles
Contact Configuration	: SPDT
Microswitch Type	: Snap Action
Switch Operation	: Off-On
Switch Terminals	: Solder
Contact Resistance	: 50mΩ
External Depth	: 6.4mm
External Width	: 19.8mm
Height	: 10.6mm
Operating Force	: 0.59N
Pre-travel	: 4mm

---

# Microswitch SPDT, Roller



**Note:** Tolerances unless otherwise specified:  $\pm 0.016/0.4$  inches/mm

Dimensions: Millimetres

## Part Number Table

Description	Operating force (gf)					OP (mm)	Max. FP (mm)	Part number
	A	B	C	D	E			
Microswitch, SPDT, 5A, Roller	20	30	40	50	55	15.5 ±1.5	18.9	M140T01-AE0505A