



12.48" E-paper Display WIFI Label User Manual GDP1248RW



Dalian Good Display Co., Ltd.

Product Specifications



Customer	Standard
Description	12.48" E-PAPER WIFI LABEL
Model Name	GDP1248RW1
Date	2023/01/16
Revision	1.0

	Design Engineering		
	Approval	Check	Design
			

Zhongnan Building, No.18, Zhonghua West ST, Ganjingzi DST, Dalian, CHINA

Tel: +86-411-84619565

Email: info@good-display.com

Website: www.good-display.com

Contents

1.Overview.....	4
2.Main Parameters.....	4
3.Drawing.....	5
4.Operating Steps.....	6
5.Abnormal Network Connection.....	8

GOOD DISPLAY

1. Overview

In order to provide better user experience for our 12.48-inch E-paper, we specially launched this GDP1248RW1 module, which is powered by Type-C and supports firmware updates. Through the ImageToWiFi software, the E-paper display screen can be controlled remotely, and at the same time, the online status of the module can be observed in real time. The module supports one-click update of display data, and can be widely used in billboards, price tags, visitor welcome signs and other fields.

2. Main Parameters

Technical Parameters	Specifications
Model Name	GDP1248RW1
Operating System	Windows7、10
Outline Dimension	280 x 230 x 19mm
Power Supply	Type-C USB Interface
Sample Code	Available
Operating Temperature	0°C ~ 40°C
Functions	To driver E-paper display via WiFi
Additional Function	Show Device WiFi Status

3. Drawing



Figure 1 Front Cover-Black 2mm

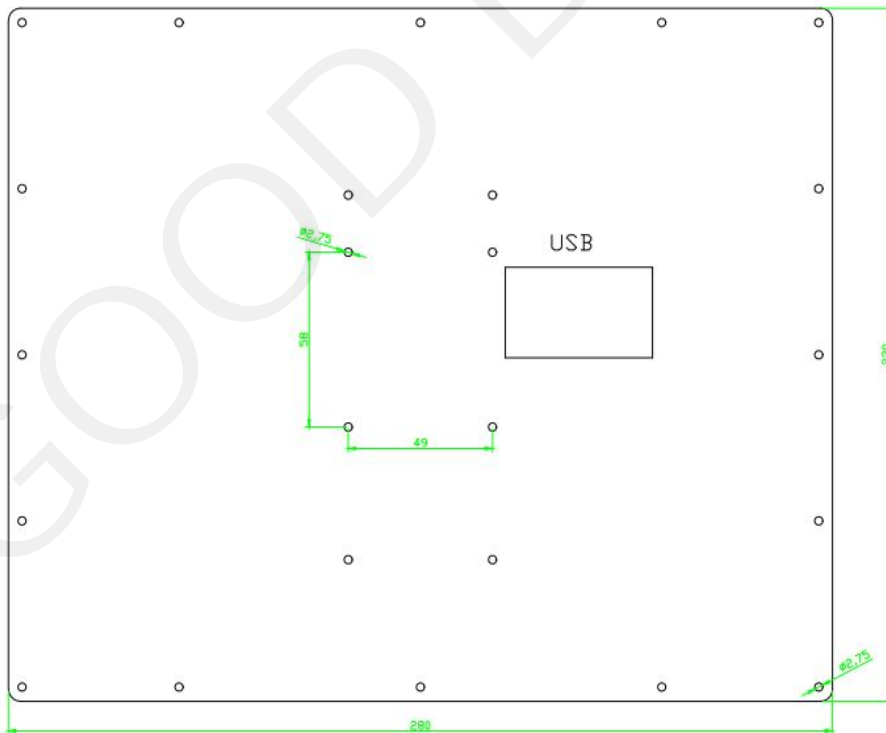


Figure 2 Back Cover-Black 2mm

4. Operating Steps

1. Input voltage is DC5V by Type-C USB interface as shown in figure 3

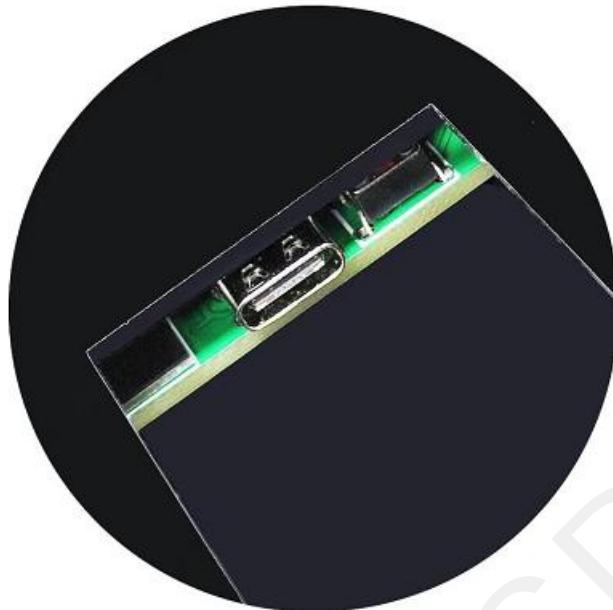


Figure 3

2. Connect the module to the PC using Type-C USB cable as shown in figure 4

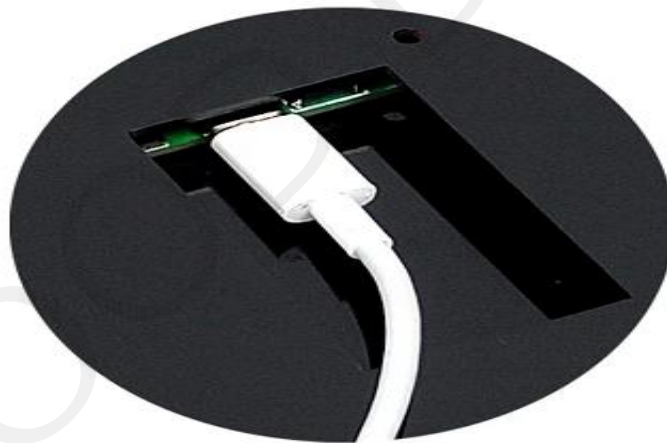


Figure 4

3. Power the device. It is generally recommended that the power supply be above 5V2A. Open the ImageToWiFi software, and the status bar will automatically query the current online status of the device. When the status indicator turns green, it means that the device on the corresponding network segment has been successfully online as shown in Figure 5

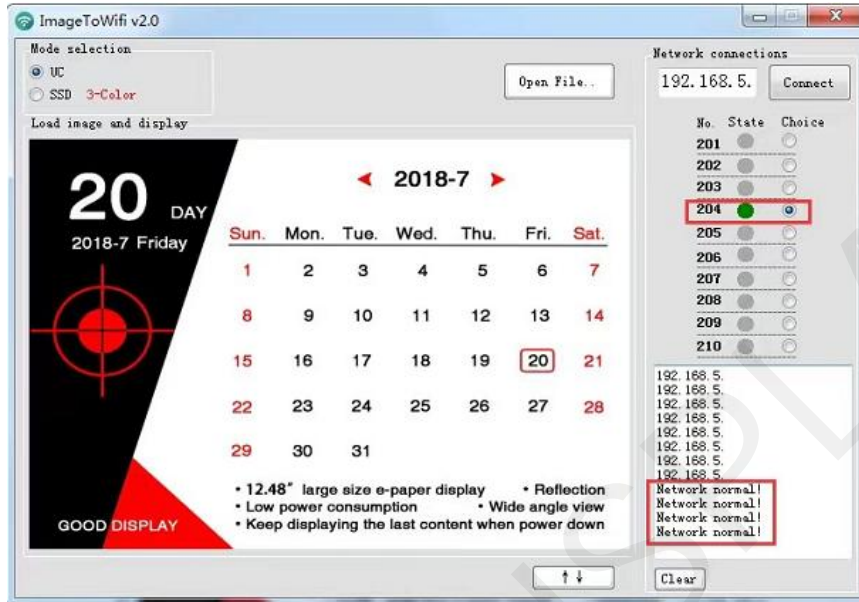


Figure 5

4. Select the IP number to be sent and click "Connect". If the data transmission is normal, the information column on the left will display the current data transmission progress. When the data transmission is completed, the software will display "Data Send is OK!" as shown in the figure 6 shown

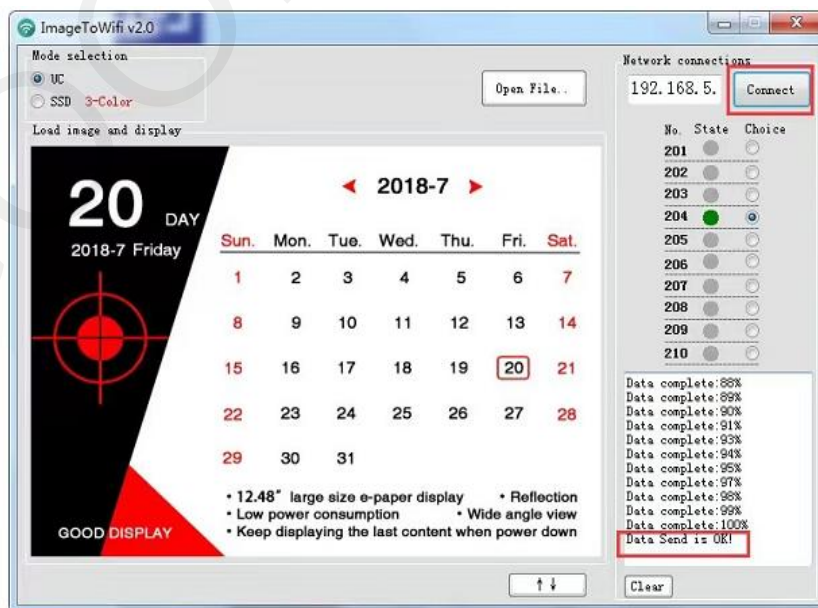


Figure 6

5. Abnormal Network Connection

Abnormal	Solution
The local IP address cannot be found	the local computer is not connected to the network
The remote device cannot be found	The device WiFi account, password, and IP address are filled incorrectly
	The power supply of the device is insufficient
	If the device is offline, you need to click the "Clean" button to re-scan the online IP status

GOOD DISPLAY