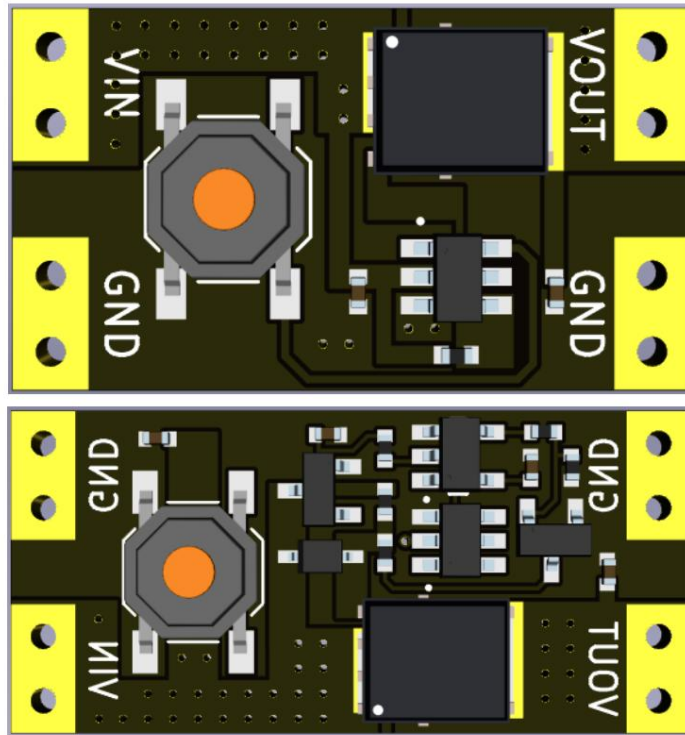




XL-10AH&L Single Button Switch Module



Time: 2023/8/6

Version V1.0



1. Module Introduction

XL-10AH and XL-10AL are wide voltage version and low power consumption version respectively.

Just by touching the switch, you can achieve the same effect as a self-locking switch by pressing it once to turn on the power and then pressing it again to turn off the power.

The function can support a maximum switch current load of 10A, and its power consumption is extremely low in the off state.

The XL-10AL power version can support working at 3.5-5.5V voltage.

The static power consumption is about 300nA, and the XL-10AH wide voltage version can support a wide range of 4.5-26V.

The surrounding voltage, its static power consumption in the shutdown state is about 1.3ua.

The module's excellent performance covers the operating voltage and working range required by most DC loads.

The small size design will not take up too much space on your device.

If you want to use other styles of buttons, you can also connect other styles of buttons through cables.

Tap the button to our switch control panel.

2. Parameter Introduction

Model: XL-10AL/XL-10AH

Operating Voltage:

XL-10AL: 3.5-5.4V

XL-10AH: 4.5-26V

Static power consumption: (there is a deviation in the sampling test but it is not large)

XL-10AL: 300na (5V voltage measurement)

XL-10AH: 1.3ua (12V voltage measurement)

Load current:

XL-10AL: 10A (5V voltage test for 30 minutes)



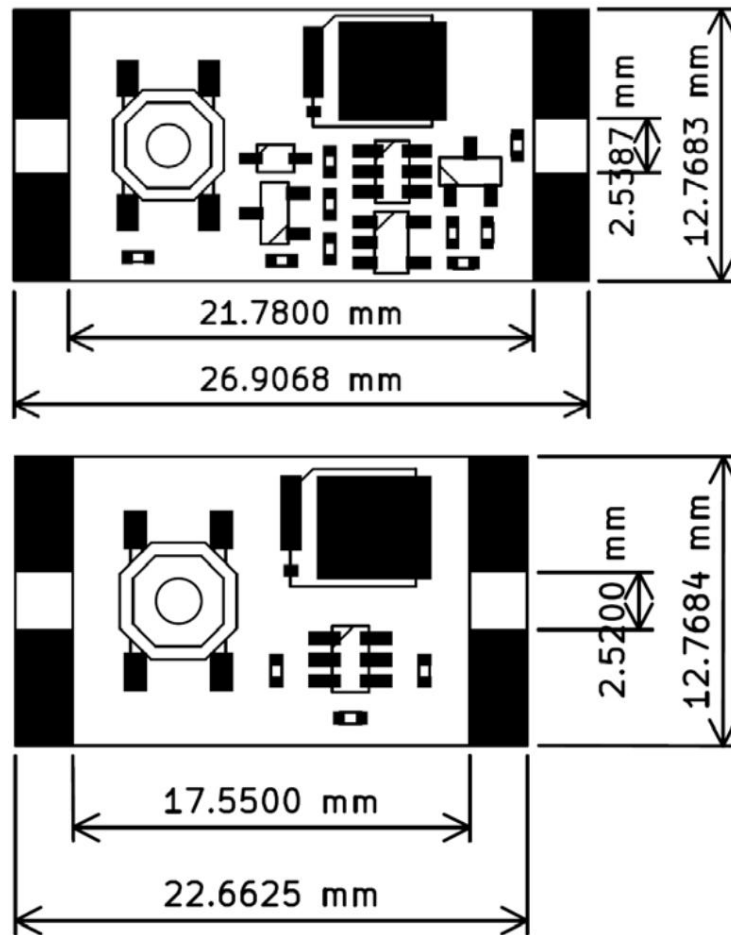
XL-10AH: 10A (12V voltage test for 30 minutes)

Pressure drop:

XL-10AL: 130mv (5V 10A measurement)

XL-10AH: 120mv (12V 10A voltage measurement)

3. Dimensions Reference



IV. Notes

1. Regarding load current, XL-10AL can run for a long time at 5V and will be very hot, but it will not work indoors.

The test was carried out for 30 minutes at a temperature of about 25°C. The voltage was not lower than 4V.

It is recommended to use 10A high current for long-term operation. Under low voltage, the heat will be too high and it is easy to burn.

Destroy the module, XL-10AH 10A current is not recommended for long-term running at voltage below 7V.



2. In the case of low current, the module input voltage is basically equal to the output voltage, and the 10A high current

The maximum voltage during current flow is 170mv, which is unavoidable, so you have to accept this fact.

elephant.

3. When using the module, do not touch it with your hands or other objects with static electricity or low resistance.

Contact with the module input and output ports will cause the module to work unstably.

4. For external connection of your own buttons, you can refer to the following figure for your connection line.

line to your button,

