



**5.83 inch
E-paper Display Series
GDEQ0583T31**

Dalian Good Display Co., Ltd.

Product Specifications



Customer	Standard
Description	5.83" E-PAPER DISPLAY
Model Name	GDEQ0583T31
Date	2022/11/21
Revision	1.0

	Design Engineering		
	Approval	Check	Design
			

Zhongnan Building, No.18, Zhonghua West ST, Ganjingzi DST, Dalian, CHINA

Tel: +86-411-84619565

Email: info@good-display.com

Website: www.good-display.com

Table of Contents

1. General Description.....	5
1.1 Overview.....	5
1.2 Feature	5
1.3 Mechanical Specification.....	5
1.4 Mechanical Drawing of EPD module	6
1.5 Module Interface	7
1.6 Matched Development Kit	8
2. Environmental.....	9
2.1 Handling, Safety and Environmental Requirements....	9
2.2 Reliability test.....	11
2.3 Outgoing Quality Control Specifications	12
2.4 Inspection Standard.....	13
3. Electrical Characteristics	18
3.1 Absolute maximum rating.....	18
3.2 DC Characteristics.....	18
3.3 Panel DC Characteristics	19
3.4 Optical Specification.....	19
3.5 AC Electrical Characteristics	20
3.6 Functional Specification and Application Circuit.....	22
3.7 Reference Circuit	24
4. Packing	25
5. Precautions	26

Version	Content	Date	Producer
1.0	New release	2022/11/21	

1. General Description

1.1 Overview

GDEQ0583T31 is a reflective electrophoretic display module on an active matrix TFT substrate, The diagonal length of the active area is 5.83" and contains 648x480 pixels. The panel is capable of displaying 1-bit black and white images depending on the associated lookup table used. The circuitry on the panel includes an integrated gate and source driver, timing controller, oscillator, DC-DC boost circuit, and memory to store the frame buffer and lookup tables, and additional circuitry to control VCOM and border settings.

1.2 Features

- Ultra wide viewing angle
- Ultra low power consumption
- I²C Signal Master Interface to read external temperature sensor.
- On chip display RAM
- Interface :4-Wire SPI or 3-Wire SPI
- Wide range of operating temperature: 0 to 50
- Wide range of storage temperature: -25 to 60
- High reflectance and contrast TFT electrophoretic.

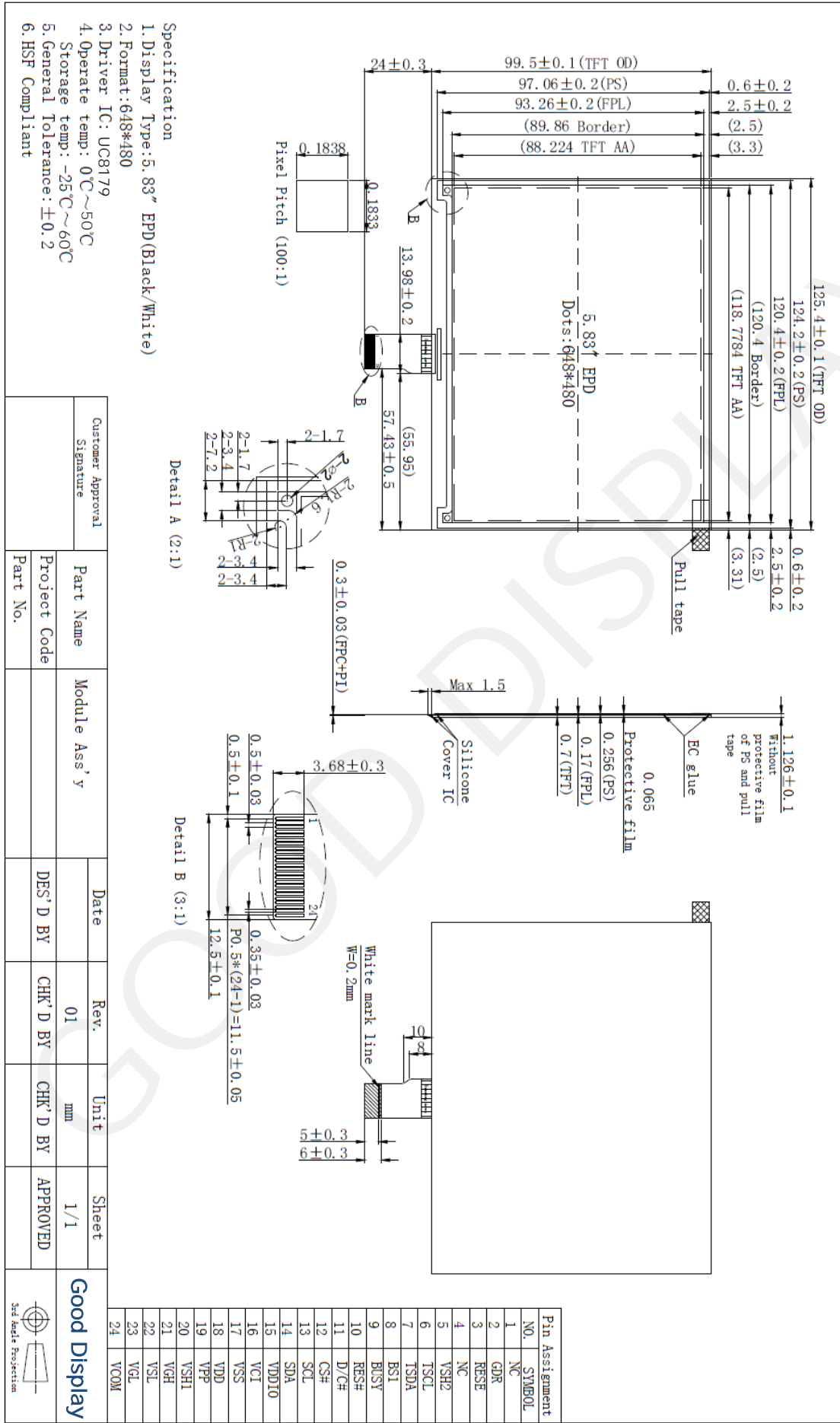
1.3 Mechanical Specifications

NO.	ITEM	SPECIFICATION	UNIT
1	TFT Area	125.4(H)×99.5(V)	mm
2	Screen Size	5.83	Inch
3	Active Area	118.7784 (H)×88.224(V)	mm
4	Pixel Pitch	0.1833×0.1833	mm
5	Pixels Per Inch	124	-
6	Outline Dimension	125.4 (H)×123.5(V) ×1.126(D)	mm
7	Resolution	648(H)×480(V)	-
8	Pixel Configuration	Square	-
9	Driver IC	UC8179	-
10	Module Weight	28.9±10%	gram

1.4 Mechanical Drawing of EPD module

如本印章非红色, 则表明该文件为非受控版本, 不会受到控制和更新. 请使用受控文件.
 分发号:

受控章



- Specification
1. Display Type: 5.83" EPD (Black/White)
 2. Format: 648*480
 3. Driver IC: UC8179
 4. Operate temp: 0°C~50°C
 5. Storage temp: -25°C~60°C
 6. General Tolerance: ±0.2
 6. HSF Compliant

Customer Approval	Signature	Part Name	Module Ass'y	Date	Rev.	Unit	Sheet
		Project Code		DES' D BY	CHK' D BY	CHK' D BY	1/1
		Part No.					APPROVED

Rev.	Date	Note
1	2021.08.05	Primary.
2		

NO.	SYMBOL	Pin Assignment
1	NC	NC
2	GDR	GDR
3	RESF	RESF
4	NC	NC
5	VSH2	VSH2
6	TSCL	TSCL
7	TSDA	TSDA
8	BS1	BS1
9	BSY	BSY
10	RES#	RES#
11	D/C#	D/C#
12	CS#	CS#
13	SCL	SCL
14	SDA	SDA
15	VDDIO	VDDIO
16	VCI	VCI
17	VSS	VSS
18	VDD	VDD
19	VPP	VPP
20	VSH1	VSH1
21	VGH	VGH
22	VSL	VSL
23	VCL	VCL
24	VCOM	VCOM

1.5. Module Interface

PIN NO.	PIN NAME	DESCRIPTION
1	NC	No Connection
2	GDR	This pin is N-Channel MOSFET gate drive control pin.
3	RESE	Current Sense Input for the control loop
4	NC	No Connection
5	VSH2	This pin is Positive Source driving voltage, VSH2 Connect a stabilizing capacitor between VSH2 and VSS in the application circuit.
6	TSCL	This pin is I ² C Interface to digital temperature sensor Clock pin. External pull up resistor is required when connecting to I ² C slave.
7	TSDA	This pin is I ² C Interface to digital temperature sensor Data pin. External pull up resistor is required when connecting to I ² C slave.
8	BS1	This pin is for selecting 3-wire(H active) or 4-wire(L active) SPI interface.
9	BUSY	This pin is Busy state output pin. When Busy is High, the operation of the chip should not be interrupted, and command should not be sent. For example, The chip would output Busy pin as High when <ul style="list-style-type: none"> - Outputting display waveform; or - Programming with OTP Communicating with digital temperature sensor In the cascade mode, the BUSY pin of the slave chip should be left open.
10	RES#	This pin is reset signal input (Active Low).
11	D/C#	This pin is Data/Command control pin connecting to the MCU
12	CS#	This pin is the chip select input connecting to the MCU.
13	SCL	This pin is serial clock pin for interface.
14	SDA	This pin is serial data pin for interface.
15	VDDIO	Power for interface logic pins
16	VCI	Power input pin for the chip.
17	VSS	Ground
18	VDD	Core logic power pin VDD can be regulated internally from VCI. A capacitor should be connected between VDD and VSS under all circumstances
19	VPP	Power Supply for OTP Programming.
20	VSH1	This pin is Positive Source driving voltage, VSH1 Connect a stabilizing capacitor between VSH1 and VSS in the application circuit.
21	VGH	This pin is Positive Gate driving voltage. Connect a stabilizing capacitor between VGH and VSS in the application circuit.
22	VSL	This pin is Negative Source driving voltage. Connect a stabilizing capacitor between VSL and VSS in the application circuit.
23	VGL	This pin is Negative Gate driving voltage. Connect a stabilizing capacitor between VGL and VSS in the application circuit.
24	VCOM	This pins is VCOM driving voltage Connect a stabilizing capacitor between VCOM and VSS in the application circuit.

1.6 Matched Development Kit

Our Development Kit designed for SPI E-paper Display aims to help users to learn how to use E-paper Display more easily. It can refresh black-white E-paper Display and three-color (black, white and red/Yellow) Good Display `s E-paper Display. And it is also added the functions of USB serial port, Raspberry Pi and LED indicator light ect.

DESPI Development Kit consists of the development board and the pinboard . More details about the Development Kit, please click to the following link:

<https://www.good-display.com/product/219.html>

2. Environmental

2.1 Handling, Safety and Environmental Requirements

WARNING
The display glass may break when it is dropped or bumped on a hard surface. Handle with care. Should the display break, do not touch the electrophoretic material. In case of contact with electrophoretic material, wash with water and soap.

CAUTION
The display module should not be exposed to harmful gases, such as acid and alkali gases, which corrode electronic components.
Disassembling the display module can cause permanent damage and invalidate the warranty agreements.
IPA solvent can only be applied on active area and the back of a glass. For the rest part, it is not allowed.

Observe general precautions that are common to handling delicate electronic components. The glass can break and front surfaces can easily be damaged.

Moreover the display is sensitive to static electricity and other rough environmental conditions.

Mounting Precautions	
(1) It`s recommended that you consider the mounting structure so that uneven force (ex. Twisted stress) is not applied to the module.	
(2) It`s recommended that you attach a transparent protective plate to the surface in order to protect the EPD. Transparent protective plate should have sufficient strength in order to resist external force.	
(3) You should adopt radiation structure to satisfy the temperature specification.	
(4) Acetic acid type and chlorine type materials for the cover case are not desirable because the former generates corrosive gas of attacking the PS at high temperature and the latter causes circuit break by electro-chemical reaction.	
(5) Do not touch, push or rub the exposed PS with glass, tweezers or anything harder than HB pencil lead. And please do not rub with dust clothes with chemical treatment. Do not touch the surface of PS for bare hand or greasy cloth. (Some cosmetics deteriorate the PS)	
(6) When the surface becomes dusty, please wipe gently with absorbent cotton or other soft materials like chamois soaks with petroleum benzene. Normal-hexane is recommended for cleaning the adhesives used to attach the PS. Do not use acetone, toluene and alcohol because they cause chemical damage to the PS.	
(7) Wipe off saliva or water drops as soon as possible. Their long time contact with PS causes deformations and color fading.	
Product specification	The data sheet contains final product specifications.

Limiting values

Limiting values given are in accordance with the Absolute Maximum Rating System (IEC 134). Stress above one or more of the limiting values may cause permanent damage to the device. These are stress ratings only and operation of the device at these or any other conditions above those given in the Characteristics sections of the specification is not implied. Exposure to limiting values for extended periods may affect device reliability.

Application information

Where application information is given, it is advisory and does not form part of the specification.

Product Environmental certification

ROHS

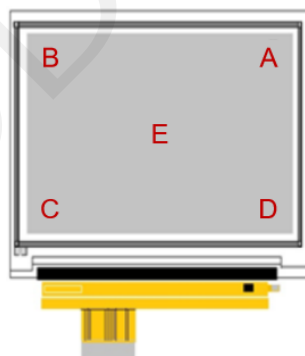
REMARK

All The specifications listed in this document are guaranteed for module only. Post-assembled operation or component(s) may impact module performance or cause unexpected effect or damage and therefore listed specifications is not warranted after any Post-assembled operation.

2.2 Reliability

NO	Test items	Test condition	QUANTITY
1	Low-Temperature Storage	T = -25°C , low temperature film T= -30°C; White screen state, for 240h.	5pcs
2	Low-Temperature Operation	T = 0°C, 240 h; Put the product into the experimental procedure, run it in the temperature box, and check it every 24 hours.	5pcs
3	High-Temperature Operation	T = 50°C, RH = 35%, 240 h; Put the product into the experimental procedure, run it in the temperature box, and check it every 24 hours.	5pcs
4	High-Temperature Storage	T=60°C, RH=35%; White screen state, for 240h.	5pcs
5	Temperature Cycle	1 cycle:[-25°C 30min]→[+60 °C 30 min]; 100 cycles.	5pcs
6	High-Temperature/ High- humidity Storage	T=50°C, RH=90%; White screen state, for 240h.	5pcs
7	UV exposure Resistance	765W/m ² for 168hrs,T = 40°C, RH=35%;	5pcs
8	ESD Contact discharge	±200V, Test 5 point; Each point discharge 10 times. Time interval is not less than 1 second.	5pcs

ESD test location



Test and measurement conditions

After the end of the experiment, the sample was taken out of the temperature chamber, and stood at room temperature for 1h, and then the sample was inspected for appearance, function and optical inspection.

Criteria for qualification (pass the test if all qualified) :

- (1) The product can be normal refresh.
- (2) There are no new point defects or line defects in the display screen.
- (3) No discoloration, blurred handwriting and barcode can be read on the complex screen.

2.3 Outgoing Quality Control Specifications

2.3.1 Sampling Method

- (1) GB/T 2828.1, inspection level II, normal inspection, single sample inspection
- (2) AQL: Major 0.4; Minor 0.65

2.3.2 Inspection Conditions

The environmental conditions for test and measurement are performed as follows.

Temperature: $23 \pm 3C$

Humidity: $55 \pm 15\%R.H$

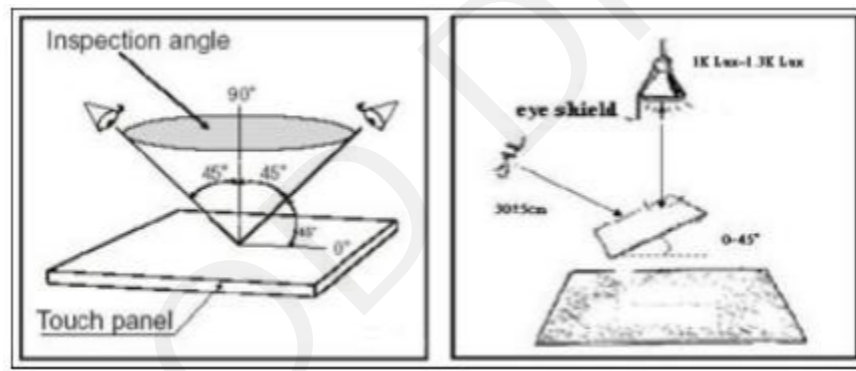
Inspection of illuminance: $800 \sim 1500Lux$

Inspection time: signal face 5S-10S

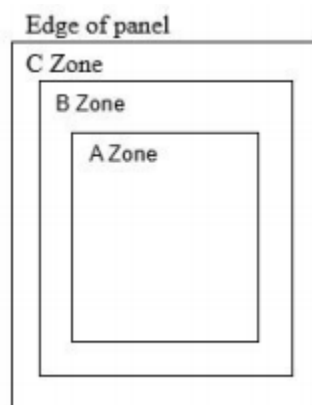
Distance between the Panel & Eyes: $30 \pm 10cm$

Viewing angle from the vertical in each direction: $\pm 45^\circ$

(See the sketch below)



2.3.3 Quality Assurance Zones

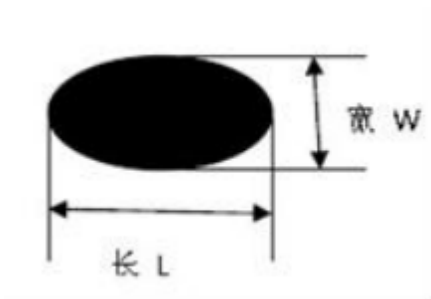


- Zone A : Active Area
- Zone B : Black Frame Area
- Zone C : Outside Black Frame Area

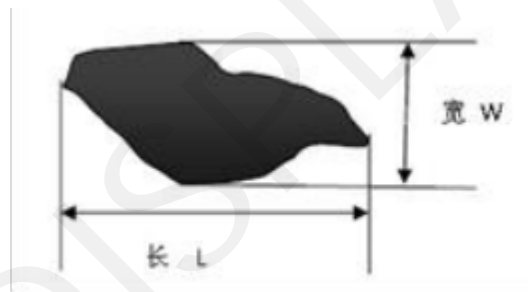
2.4 Inspection Standard

Defects Definition of &L&W (Unit:mm)

2.4.1 Dot defects:

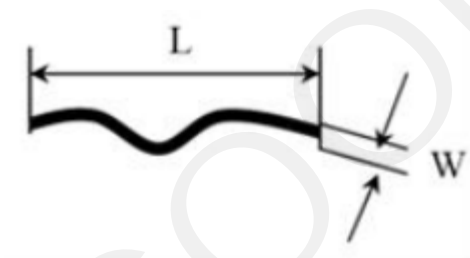


$$\Phi D = \text{Max}(L, W)$$

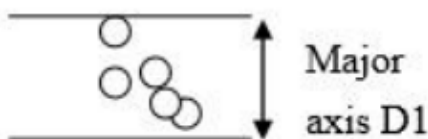


$$\Phi = D\text{Max}(L, W)$$

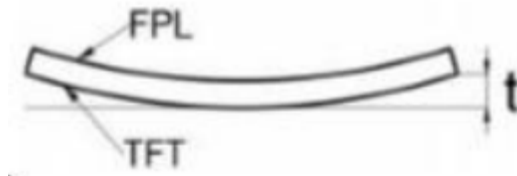
2.4.2 Line defect:



2.4.3 Small bubble aggregation and large bubble definition:




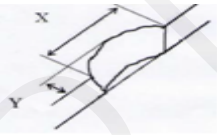
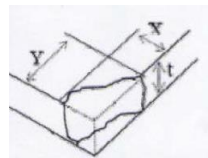
2.4.4 TFT warpage:



Identification and packaging inspection


NO.	ITEM	CRITERIA	Method	Defect level
1	Package	(1). The products are completely placed in the anti-static tray without overlapping. (2). Products with different models cannot be mixed in one internal packaging bag. (3). There is a desiccant in the packaging bag, with good internal packaging and no expansion of the packaging bag. (4). The Tray model, quantity and way used for packaging meet the requirements of product specifications.	Sight Check	Minor
2	Inner and outer packing	(1) No obvious deformation, damage, dampness or dirt on the packing case; (2) The type, quantity and method of the packing case used shall meet the requirements of the product specification. (3) There is no font or unclear design in the outer packing box.	Sight Check	Minor
3	Labels for inner and outer cases	(1). Any unnecessary marks or marks are not allowed to exist; (2). The label information such as model, specification, quantity, weight, material number, month label and environmental protection label should be clear and correct, which should be in line with product specifications or marked according to customer requirements.	Sight Check	Minor

Appearance Defects

NO.	ITEM	CRITERIA	Acceptable range	Method	Defect level	Area
1	Spotty (black spots, white spots, foreign bodies, air bubbles, bumps)	$D \leq 0.25\text{mm}$	Ignore	Film Card	Minor	Zone A
		$0.25\text{mm} < D \leq 0.5 \text{ mm}$, Distance $\geq 5\text{mm}$	$N \leq 4$			
		$D > 0.5 \text{ mm}$	$N = 0$			
		$0.1\text{mm} < D \leq 0.25 \text{ mm}$ (Dense point)	$N \leq 3/\text{cm}^2$			
2	POOR LINEAR SHAPE (foreign body, glass scratch)	$L \leq 2\text{mm}$, $W \leq 0.1\text{mm}$	Ignore	Film Card	Minor	Zone A
		$2\text{mm} < L \leq 8\text{mm}$, $0.1 < W \leq 0.5\text{mm}$	$N \leq 4$			
		$L > 8\text{mm}$, $W > 0.5\text{mm}$ Note: FPL Lacerations are not allowed	$N = 0$			
	steel pit	Long strip pits are not allowed	$N = 0$	Sight Check	Minor	Zone A
3	Glass Crack	Extensional cracks are not allowed 	$N = 0$	Sight Check	Major	Zone B,C
4	Edge breakage	$X \leq 3\text{mm}$, $Y \leq 0.5\text{mm}$, It does not affect the electrode 	$N \leq 2$	Sight Check/ <u>Microsc</u> <u>ope</u>	Minor	Zone C
5	Chip Package Chip Off	$X \leq 2\text{mm}$ · $Y \leq 2\text{mm}$, It does not affect the electrode(FPC edge) $X \leq 1\text{mm}$ · $Y \leq 1\text{mm}$, It does not affect the electrode((Not FPC edge) 	$N \leq 2$	Sight Check/ <u>Microsc</u> <u>ope</u>	Minor	Zone C
6	Dirt	No dirt (finger print, dust, residual glue, etc.)	Ignore	Sight Check	Minor	Zone A,B
7	Silicone	The maximum diameter of a single bubble cannot exceed 2mm	$N \leq 2$	Sight Check/ Film card	Minor	Zone C
		Crack is not allowed and there are no visible impurities in the glue of the lead part	$N = 0$			
		The adhesive must completely cover the ACF, lead area and IC and should be applied evenly	$N = 0$			

NO.	ITEM	CRITERIA	Acceptable range	Method	Defect level	Area
		No glue leakage, no obvious lack of glue in the lead area	N=0			
		Glue height exceeds PS surface	N=0			
		FPC Front overflow glue width>0.5mm or Back side overflow glue width>1mm	N=0			
8	Edge Sealing Adhesive	No glue leakage	N=0	Sight Check/ Film card	Major	Zone C
		The height of sealant exceeds PS surface	N=0		Minor	
		The edge sealing adhesive shall not leak the TFT glass substrate	N=0			
		Judging Ok of water-blocking area ≥ 0.7 mm of PS edge sealant	N=0		Minor	
9	Protective film	Foreign body in protective film	N=0	Sight Check	Minor	Zone A
		The protective film punctures and injures FPL	N=0			
10	Pull Tape	Attachment position is wrong Cannot tear up the protective film	N=0	Sight Check	Minor	Zone C
11	FPC	FPC has break, scratch, gold finger stripping or oxidation, dirty, residual glue	N=0	Sight Check	Major	Zone C
12	Glass edge bulge	$X \leq 3\text{mm} \cdot Y \leq 0.3\text{mm}$	$N \leq 1$	Sight Check	Minor	Zone C
13	Warping	$t > 1\text{mm}$ (3.5inch below) $t > 3\text{mm}$ (3.5inch above)	N=0	Plug Gage	Minor	Zone C
14	Chromatism	Color difference in silver paste area (Not in Zone A)	Ignore	Sight Check	Minor	Zone C
		FPL Peeling occurs, chromatic aberration occurs	N=0	Sight Check	Major	Zone A,B
		The color difference of side loss of FPL in zone B $\geq 1/2$ width	N=0	Sight Check	Major	Zone A,B
15	Silver pulp point	FPL and TFT substrate conduction, silver point <1.0mm (Both single silver point and double silver point should meet this specification)	N=0	Film card	Major	Zone C
16	Inkjet code	The ink jet printing font is clear, identifiable, and cannot be missing	N=0	Sight Check	Minor	Zone C

Displaying Defects

NO.	ITEM	CRITERIA	Acceptable range	Method	Defect level	Area
1	Poor DOT SHAPE (black, white, group White)	$D \leq 0.25\text{mm}$	Ignore	Film Card	Major	Zone A
		$0.25\text{mm} < D \leq 0.5\text{mm}$, Distance $\geq 5\text{mm}$	$N \leq 4$			
		$D > 0.5\text{mm}$	$N = 0$			
		$0.1\text{mm} < D \leq 0.25\text{mm}$ (Dense point)	$N \leq 3/\text{cm}^2$			
2	Line defects	White or black lines running through the entire screen under any operation interface 	$N = 0$	Sight Check	Major	Zone A
3	<u>ghost</u>	Ghosts appear only during screen switching	Ignore	Sight Check	Major	Zone A
4	Flash Point	Flash point occurs during screen switching only	Ignore	Sight Check	Major	Zone A
5	Flash Line	Flash line occurs during screen switching only	$N = 0$	Sight Check	Major	Zone A
6	Display screen error	Unable to display a fixed screen correctly	$N = 0$	Sight Check	Major	Zone A
7	Display abnormal	No display, The red matrix darkens, Note fuzzy, bar code can not be scanned,	$N = 0$	Sight Check	Major	Zone A
8	Residual image	Residual Image Inspection (visual, final judgment reference optical specification)	$N = 0$	Sight Check	Major	Zone A
9	Mura Anomaly	White/gray. Mura doesn't allow it	$N = 0$	Sight Check	Major	Zone A

3. Electrical Characteristics

3.1 Absolute Maximum Rating

ITEM	SYMBOL	MIN	MAX	UNIT	REMARK
Logic supply voltage	V _{CI} V _{DD}	-0.3	+6.0	V	-
I/O supply voltage	V _{DDIO}	-0.3	+6.0	V	
OTP Program voltage	V _{PP}	-0.3	+8.0	V	-
Digital Input voltage	V _I	-0.3	V _{DDIO} +0.3	V	-
Operating Temp.	Top	0	+50	°C	-
Storage Temp	T _{stg}	-25	+60	°C	-

Note (1): All of the voltages are on the basis of "VSS = 0V".

Note (2): Maximum ratings are those values beyond which damages to the device may occur.

Functional operation should be restricted to the limits in the Panel DC Characteristics tables.

3.2 DC Characteristics

The following specifications apply for: VSS=0V, VCI=3.0V, TOPR =25°C

Parameter	Symbol	Condition	Applicable pin	Min.	Typ.	Max.	Unit
Supply Voltage	V _{DD}	-		2.3	3.3	3.6	V
IO supply voltage	V _{DDIO}	-		2.3	3.3	3.6	V
DCDC driver supply	V _{CI}			2.3	3.3	3.6	V
High level input voltage	V _{IH}	Digital input pins	-	0.7*V _{DDIO}	-	V _{DDIO}	V
Low level input voltage	V _{IL}	Digital input pins	-	0	-	0.3*V _{DDIO}	V
High level output voltage	V _{OH}	I _{OH} = 400uA	-	V _{DDIO} -0.4	-	-	V
Low level output voltage	V _{OL}	I _{OL} = -400uA	-	0	-	0.4	V
Typical power panel	P _{TYP}	-	-	-	19.8	-	mW
Standby power panel	P _{STPY}	-	-	-	0.0066	-	mW
Typical operating current(white state)	I _{opr_VCI}	-	-	-	6	-	mA
Full update time	-	25 °C	-	-	4	-	sec
Fast update time	-	25 °C	-	-	1	-	sec
Partial update time	-	25 °C	-	-	0.2	-	sec
Sleep mode current	I _{slp_VCI}	V _{CI} =3.3V DC/DC OFF No clock No output load Ram data retain	V _{CI}	-	40	70	uA
Deep sleep mode current	I _{dslp_VCI}	V _{DD} OFF	V _{CI}	-	2	5	uA

Note: The VPP, VCI, VDDIO input must be kept in a stable value; ripple and noise are not allowed.

3.3 Panel DC Characteristics (Driver IC Internal Regulators)

The following specifications apply for: VSS=0V, VCI=3.3V, TOPR =25°C.

Parameter	Symbol	Condition	Applicable pin	Min.	Typ.	Max.	Unit
VCOM output voltage	VCOM	-	VCOM	-	-2.0	-	V
Positive Source output voltage	V _{SH}	-	S ₀ ~S ₇₉₉	-	15	-	V
Negative Source output voltage	V _{SL}	-	S ₀ ~S ₇₉₉	-	-15	-	V
Positive gate output voltage	V _{gh}	-	G ₀ ~G ₄₇₉	19.5	20	20.5	V
Negative gate output voltage	V _{gl}	-	G ₀ ~G ₄₇₉		-20		V

3.4 Optical Specification

Measurements are made with that the illumination is under an angle of 45 degree, the detection is perpendicular unless otherwise specified.

Symbol	Parameter	Conditions	Min	Typ.	Max	Units	Notes
R	White Reflectivity	White	30	35	-	%	Note 1
CR	Contrast Ratio	indoor	8:1	-	-	-	Note 2
T update	Image update time	25 °C	-	4	-	sec	
Tlife	Life	Topr	-	1000000 times or 5years	-	-	-

Notes1: Luminance meter: Eye-One Pro Spectrophotometer.

Notes2:CR=Surface Reflectance with all white pixel/Surface Reflectance with all black pixels.

3.5 AC Electrical Characteristics

(1) Serial Peripheral Interface for 3-SPI

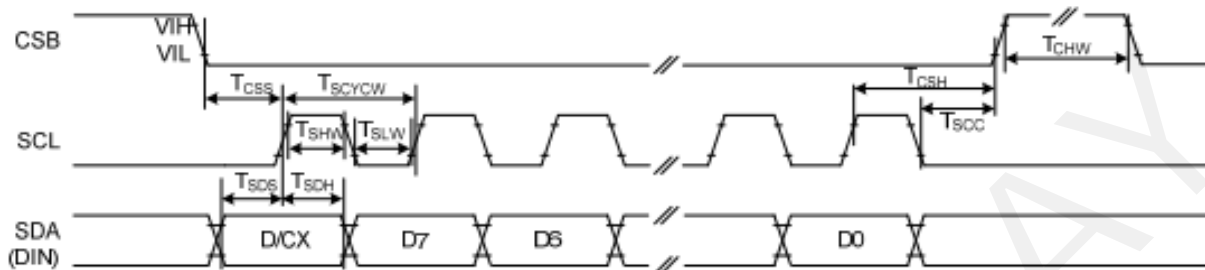


Figure: 3-wire Serial Interface Characteristics (Write mode)

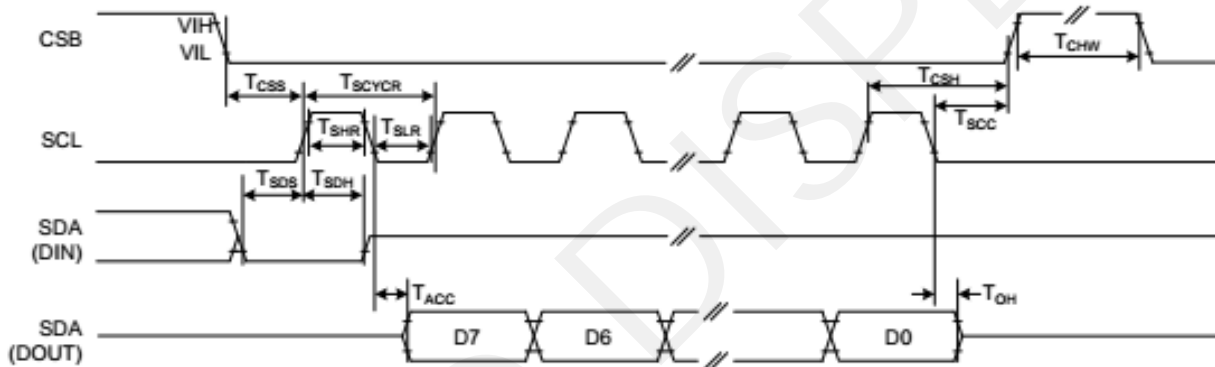


Figure: 3-wire Serial Interface Characteristics (Read mode)

Symbol	Signal / Parameter	Conditions	Min.	Typ.	Max.	Unit
T_{CSS}	CSB	Chip select setup time	60			ns
T_{CSH}		Chip select hold time	65			ns
T_{SCC}		Chip select setup time	20			ns
T_{CHW}		Chip select setup time	40			ns
T_{SCYCW}	SCL	Serial clock cycle (Write)	100			ns
T_{SHW}		SCL "H" pulse width (Write)	35			ns
T_{SLW}		SCL "L" pulse width (Write)	35			ns
T_{SCYCR}		Serial clock cycle (Read)	150			ns
T_{SHR}		SCL "H" pulse width (Read)	60			ns
T_{SLR}	SCL "L" pulse width (Read)	60			ns	
T_{SDS}	SDA (DIN)	Data setup time	30			ns
T_{SDH}		Data hold time	30			ns
T_{ACC}	SDA (DOUT)	Access time			50	ns
T_{OH}		Output disable time	15			ns

(2) Serial Peripheral Interface for 4-SPI

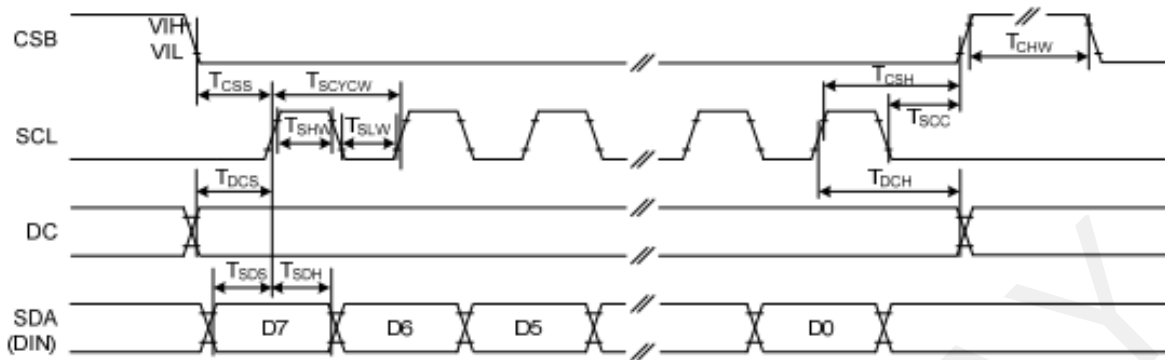


Figure: 4-wire Serial Interface Characteristics (Write mode)

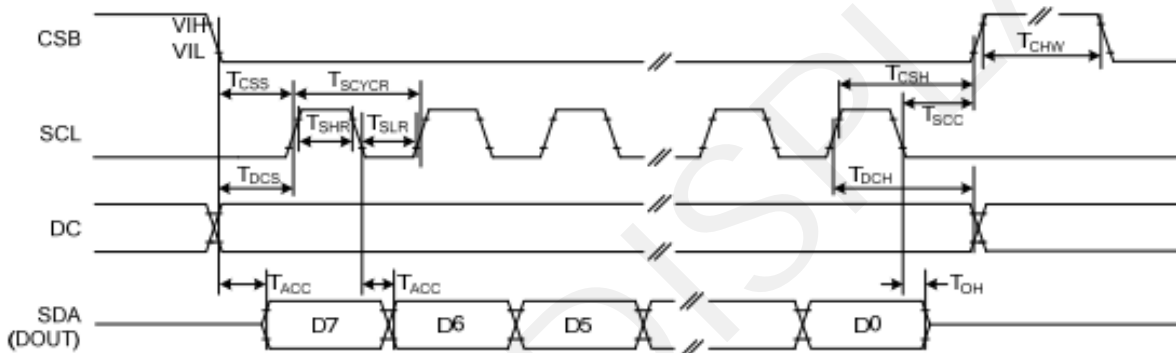


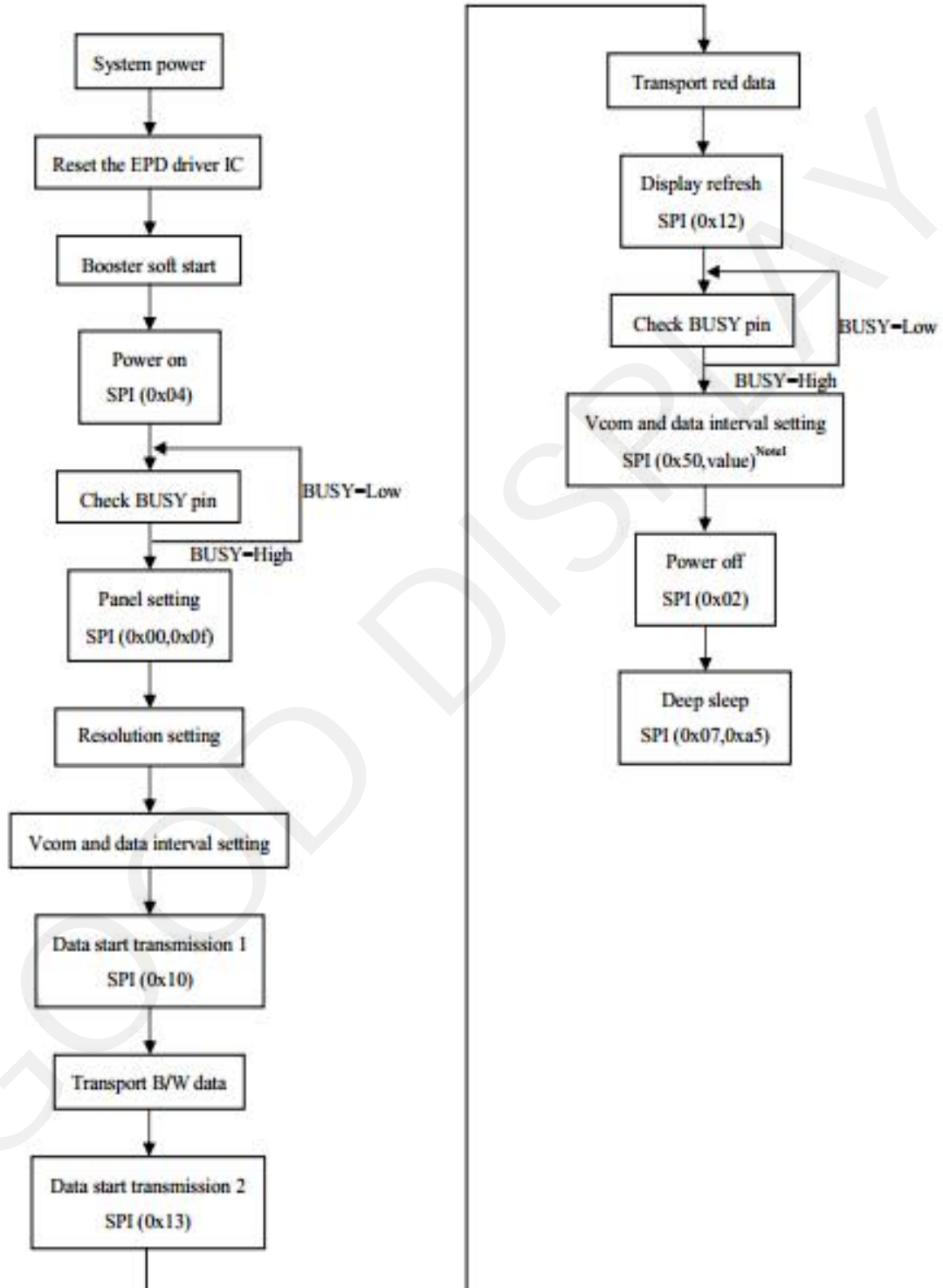
Figure: 4-wire Serial Interface Characteristics (Read mode)

Symbol	Signal / Parameter	Conditions	Min.	Typ.	Max.	Unit
T_{CSS}	CSB	Chip select setup time	60			ns
T_{CSH}		Chip select hold time	65			ns
T_{SCC}		Chip select setup time	20			ns
T_{CHW}		Chip select setup time	40			ns
T_{SCYCW}	SCL	Serial clock cycle (Write)	100			ns
T_{SHW}		SCL "H" pulse width (Write)	35			ns
T_{SLW}		SCL "L" pulse width (Write)	35			ns
T_{SCYCR}		Serial clock cycle (Read)	150			ns
T_{SHR}		SCL "H" pulse width (Read)	60			ns
T_{SLR}		SCL "L" pulse width (Read)	60			ns
T_{DCS}	DC	DC setup time	30			ns
T_{DCH}		DC hold time	30			ns
T_{SDS}	SDA (DIN)	Data setup time	30			ns
T_{SDH}		Data hold time	30			ns
T_{ACC}	SDA	Access time			50	ns
T_{OH}	SDA (DOUT)	Output disable time	15			ns

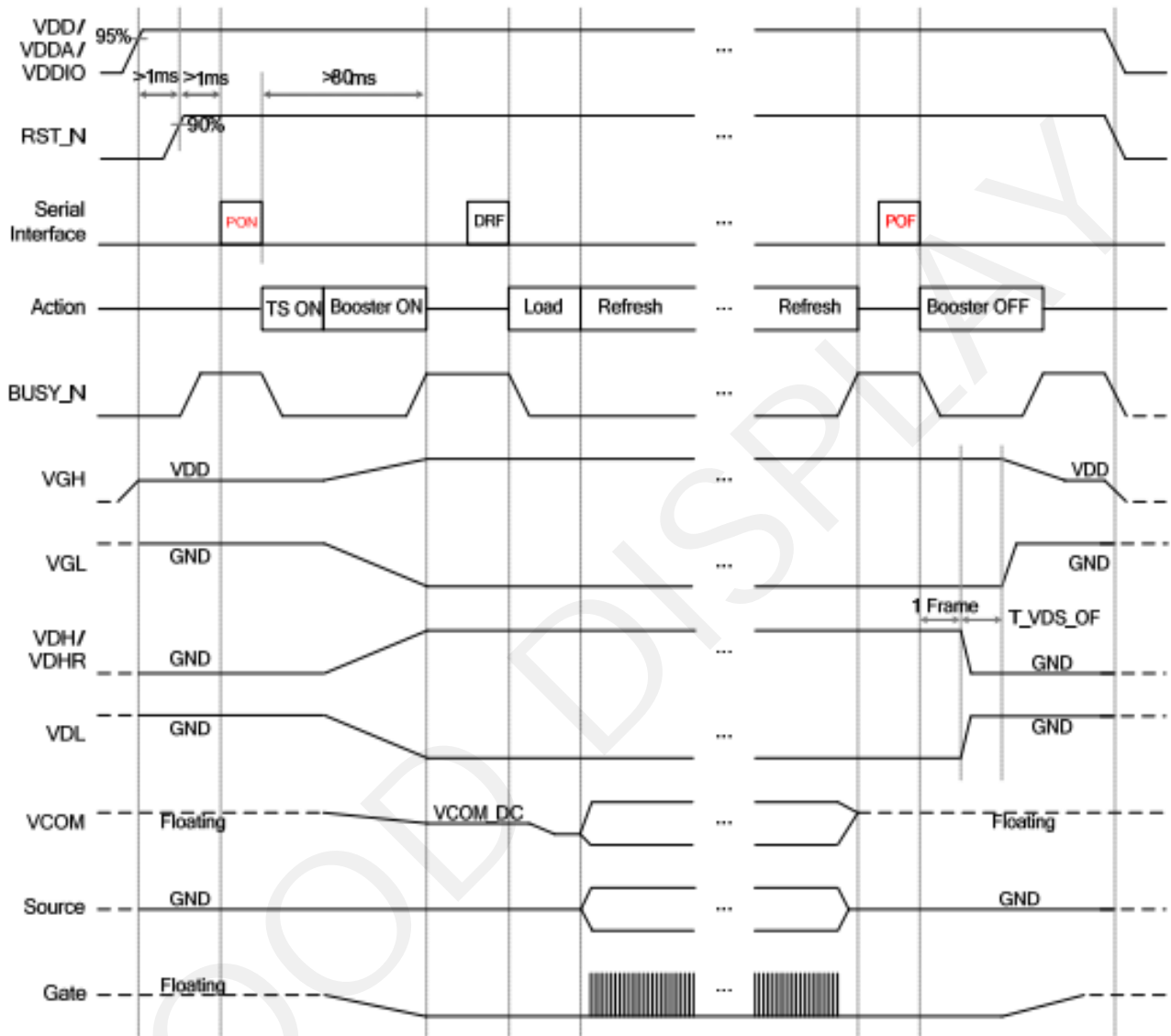
3.6 Functional Specification and Application Circuit

3.6.1 Operation Flow and Code Sequence

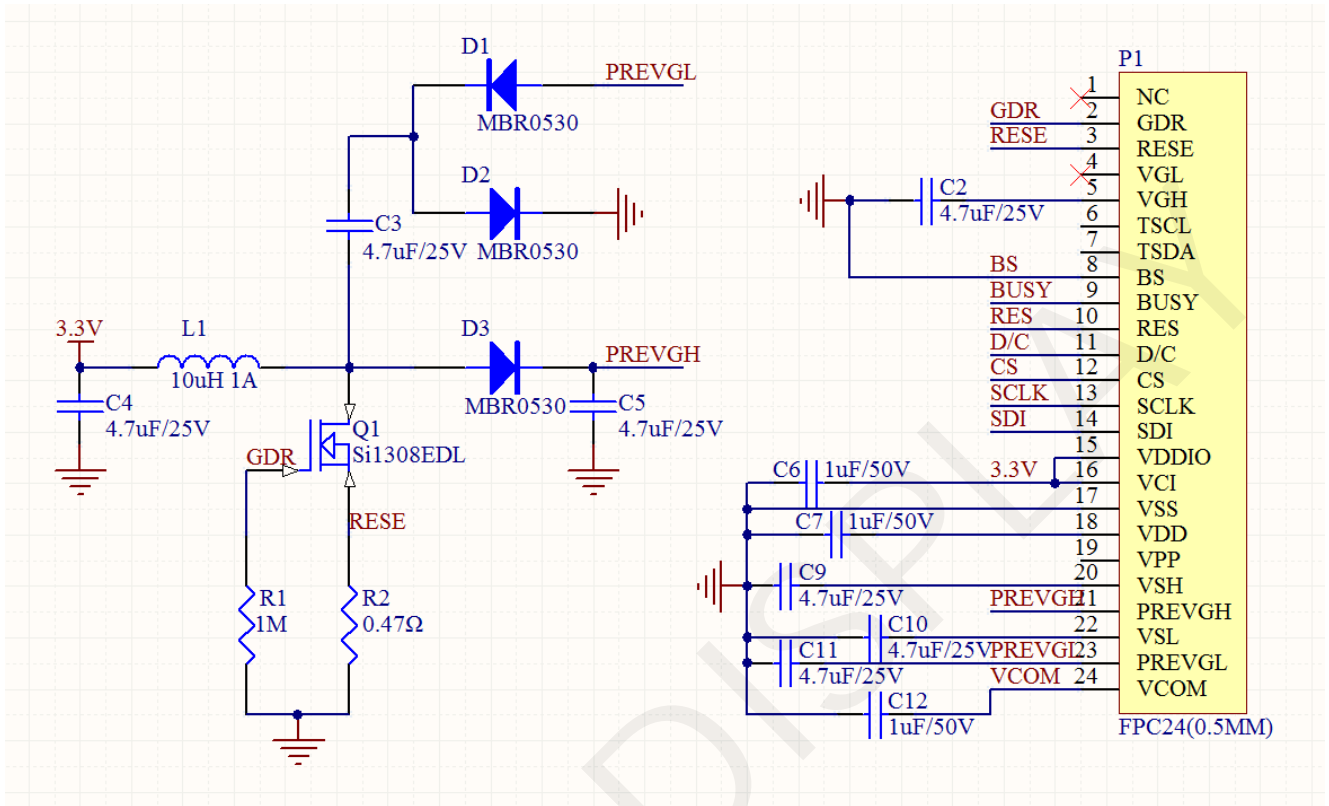
General operation flow to drive display panel



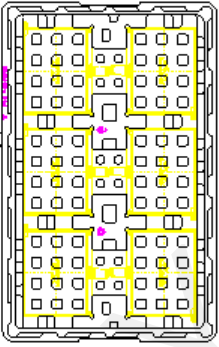
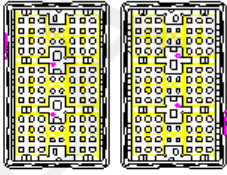
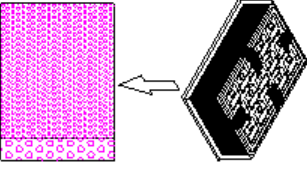
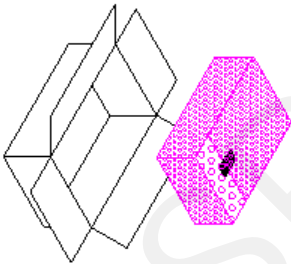
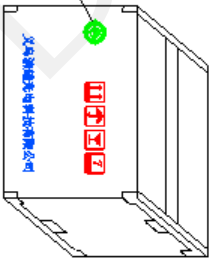
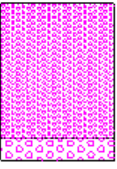
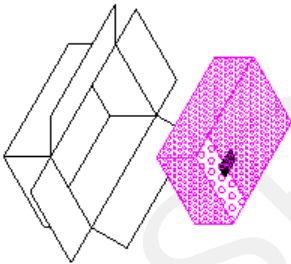
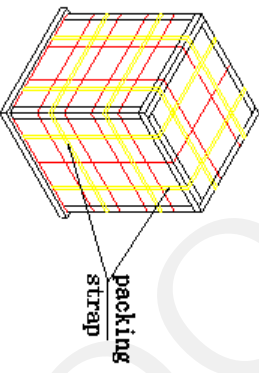
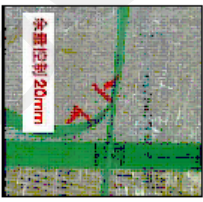
3.6.2 Power ON/Power OFF Sequence




3.7 Reference Circuit



4. Packing

Controlled Seal		Packing Process (1) ~ (12)			
(1)		(2)		(3)	order ①、②、①、② fix trays with tape 186 pcs of 1 carton 1 tray contain 6 pcs 31 contained trays, 1 empty tray
(5)	After tray be packed, wrap the package in a bubble bag and seal with scotch tape. 	(6)		(7)	31 contained trays, 1 empty Package quantity products: 186 pcs of 1 carton. 
(9)	Use paper edge protector Top face paper edge protector type : P213010-W3-A Side 100*40*20mm, 7*5mm Slide face paper edge protector type : P213010-W3-A Size: 100*40*20mm, 7*5mm 	(10)	Enwind stretch film Wrap 3 layers of stretch film around the paper sheath (All around and on top). Wrap paper pallets, pallets, and boxes underneath 	(11)	Pack packing strap The packing tape should be tied to the carton. If Stack height greater than or equal to 3 layers, 2 turns in length, width and height; If the stack height is less than 3 layers, the height direction is not used pack. 
				(12)	Pack packing strap The surface of the packing belt shall not be twisted, skewed or cracked. After the packaging is completed, the tightness of the packaging belt is suitable. Use the packing iron buckle to fix the belt and cut off the excess packaging belt. The remaining amount is less than or equal to 20mm. 
				(8)	Pallet stack Pallet Type: 1100*1100*150mm Plastic Pallet <ul style="list-style-type: none"> 一、The air carton is of one layer. 二、The surface stack of one layer. 三、If the alignment is left then the full container, empty container shall be used to fill the carton. 四、Floor for aligner. 五、Each carton layer should be centered on the pallet.

NOTE:1、The inner cartoster carton must be sealed with adhesive tape.

- 2、Fill up the gap with empty tray.
- 3、If the customer has special needs with the ROHS making, the inner carton and master carton need adhesive new ROHS marking at .
- 4、Packaging materials are not recommended for recycling.

5. Precautions

- (1) Do not apply pressure to the EPD panel in order to prevent damaging it.
- (2) Do not connect or disconnect the interface connector while the EPD panel is in operation.
- (3) Do not touch IC bonding area. It may scratch TFT lead or damage IC function.
- (4) Please be mindful of moisture to avoid its penetration into the EPD panel, which may cause damage during operation.
- (5) If the EPD Panel / Module is not refreshed every 24 hours, a phenomena known as "Ghosting" or "Image Sticking" may occur. It is recommended to refreshed the ESL /EPD Tag every 24 hours in use case. It is recommended that customer ships or stores the ESL / EPD Tag with a completely white image to avoid this issue
- (6) High temperature, high humidity, sunlight or fluorescent light may degrade the EPD panel's performance. Please do not expose the unprotected EPD panel to high temperature, high humidity, sunlight, or fluorescent for long periods of time.
- (7) For more precautions, please click on the link:
<https://www.good-display.com/news/80.html>