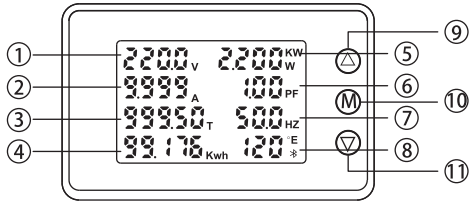


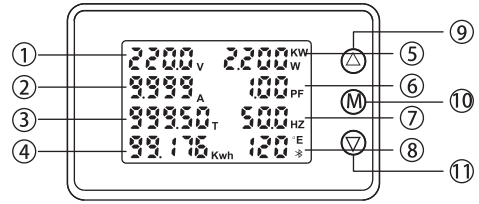
90x195mm

KWS-AC301电能表使用说明



- 1.电压
- 2.电流
- 3.计时
- 4.电能
- 5.功率
- 6.功率因数
- 7.频率
- 8.温度
- 9.上调键
- 10.功能键
- 11.下调键

Instruction Manual of KWS-AC301electric meter



- 1. Voltage
- 2. Current
- 3. Timing
- 4. Electric energy
- 5. Electric power
- 6. Power factor
- 7. Frequency
- 8. Temperature
- 9. Up key
- 10. Function key
- 11. Down key

产品型号

型号	AC301-20A	AC301-100A	AC301L-20A	AC301L-100A
分流方式	内置	外置	内置	外置
485通信	无	无	有	有
电压	50-300V	50-300V	50-300V	50-300V
电流	0-20A	0-100A	0-20A	0-100A
温度	-20~150℃	-20~150℃	-20~150℃	-20~150℃
功率	0-4.4KW	0-22KW	0-4.4KW	0-22KW
电能	0.001-99999kwh	0.001-99999kwh	0.001-99999kwh	0.001-99999kwh
计时	0.01-999	0.01-999	0.01-999	0.01-999
频率	50-60HZ	50-60HZ	50-60HZ	50-60HZ
功率因素	0.01-1PF	0.01-1PF	0.01-1PF	0.01-1PF

Product model number:

Model number	AC301-20A	AC301-100A	AC301L-20A	AC301L-100A
Current system	built-in	extraposition	built-in	extraposition
485 communication	without	without	exist	exist
Voltage	50-300V	50-300V	50-300V	50-300V
Current	0-20A	0-100A	0-20A	0-100A
Temperature	-20~150 C	-20~150 C	-20~150 C	-20~150 C
Electric power	0-4.4KW	0-22KW	0-4.4KW	0-22KW
Electric energy	0.001-99999kwh	0.001-99999kwh	0.001-99999kwh	0.001-99999kwh
Timing	0.01-999	0.01-999	0.01-999	0.01-999
Frequency	50-60HZ	50-60HZ	50-60HZ	50-60HZ
Power factor	0.01-1PF	0.01-1PF	0.01-1PF	0.01-1PF

操作说明:

- △加键、▽减键、M功能键
- 长按M键三秒进入设置，双击M键换行，单击M键移位，双击△加键移动小数点。
- 报警提示设置，当设定好数值长按M键3秒保存。实际测试值大于等于设定值大于等于设定值才会出现报警提示。当仪表有报警时才会发出声音。同时屏幕上数值单位会出现闪烁。
如：电流设定为1.000A报警，实际使用电流大于1.000A会出现提示怎么。

关闭报警提示方法:

把报警值设定大于实际使用数值或者把所有报警数值设定为0。

电能和计时清零方法:

长按△键3秒计时出现闪烁时单击M键清零计时，双击M键换行到电能，单击M键清零。

恢复出厂设置:

按住▽键不放，再通电听到仪表发出声音后说明恢复成功，出厂设置电压报警值为275V，其它都为0

Operating Instructions:

- △Up key, ▽Down key, MFunction key.
- Longpress the M key for three seconds to enter the setting, double-click the M key to wrap, and click the M key to shift. Double click△The key moves the decimal point.
- Longpress the M key for 3 seconds to savethewarning setting. A warning will only appear when the actual test value is greater than or equal to the set value. The meter will only sound when there is awarning. At the same time, the numerical unit will flash on the screen. For example, if the warningcurrent is set to 1.000A, the warning will appear when the actual current is greater than 1.000A.

The method of turning off the warning:

Set the warning value to be greater than the actual value or set all warning values to 0.

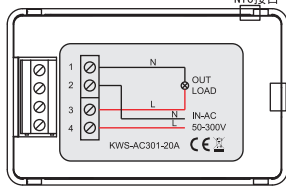
The method of resettingelectric energy and timing:

Long press the △ key for 3 seconds, when the timer flashes, click the M key to reset the timer. Double-click the M key to switch to the electric energy, and click the M key to reset.

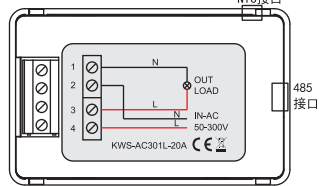
Factory data resetting:

Long press the ▽ key, and then turn on the power. After the meter emits a sound, it means that the factory settings are resetted successfully.The factory default voltage warning value is 275V, and all others are 0.

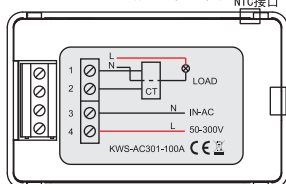
KWS-AC301-20A接线示意图



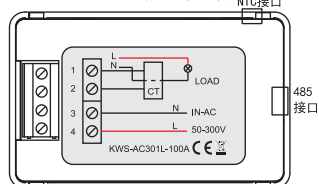
KWS-AC301L-20A接线示意图



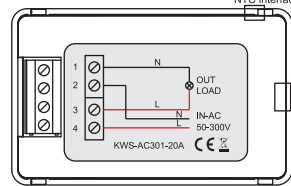
KWS-AC301-100A接线示意图



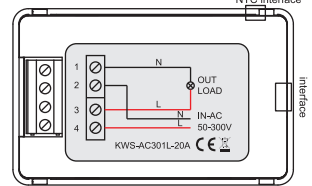
KWS-AC301L-100A接线示意图



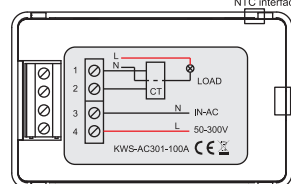
Wiring diagram of KWS-AC301-20A



Wiring diagram of KWS-AC301L-20A



Wiring diagram of KWS-AC301-100A



Wiring diagram of KWS-AC301L-100A

